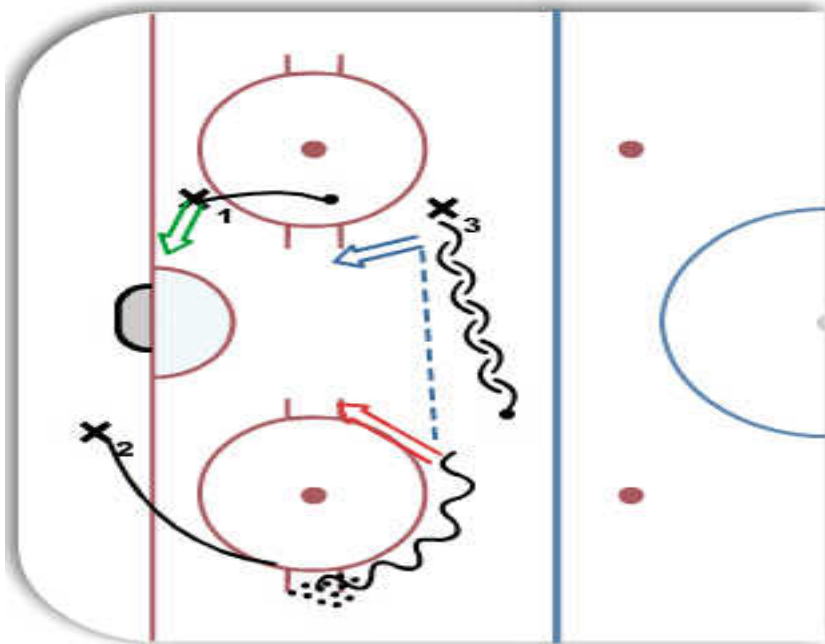




DOWN LOW SHOT PATTERN PART 2



Drill Description:

This play recognition drill is a continuation of Part 1. Where we continue to recognize d zone patterns. After the first shot X2 the picks up puck at half wall and skates along top of the circle looking to either **shoot**, **pass to X3 who has skated back wards for a one timer**, or **find X1 who has dropped down low for a back door pass**.

Key Points:

- See the puck carriers options and trust your read
- Use motion or a conservative depth but be ready to be aggressive if X2 passes to X3 for one-timer
- Priority is still on the shot